

CERTIFICATE OF LOCATION OF GOVERNMENT CORNER

County of Anoka

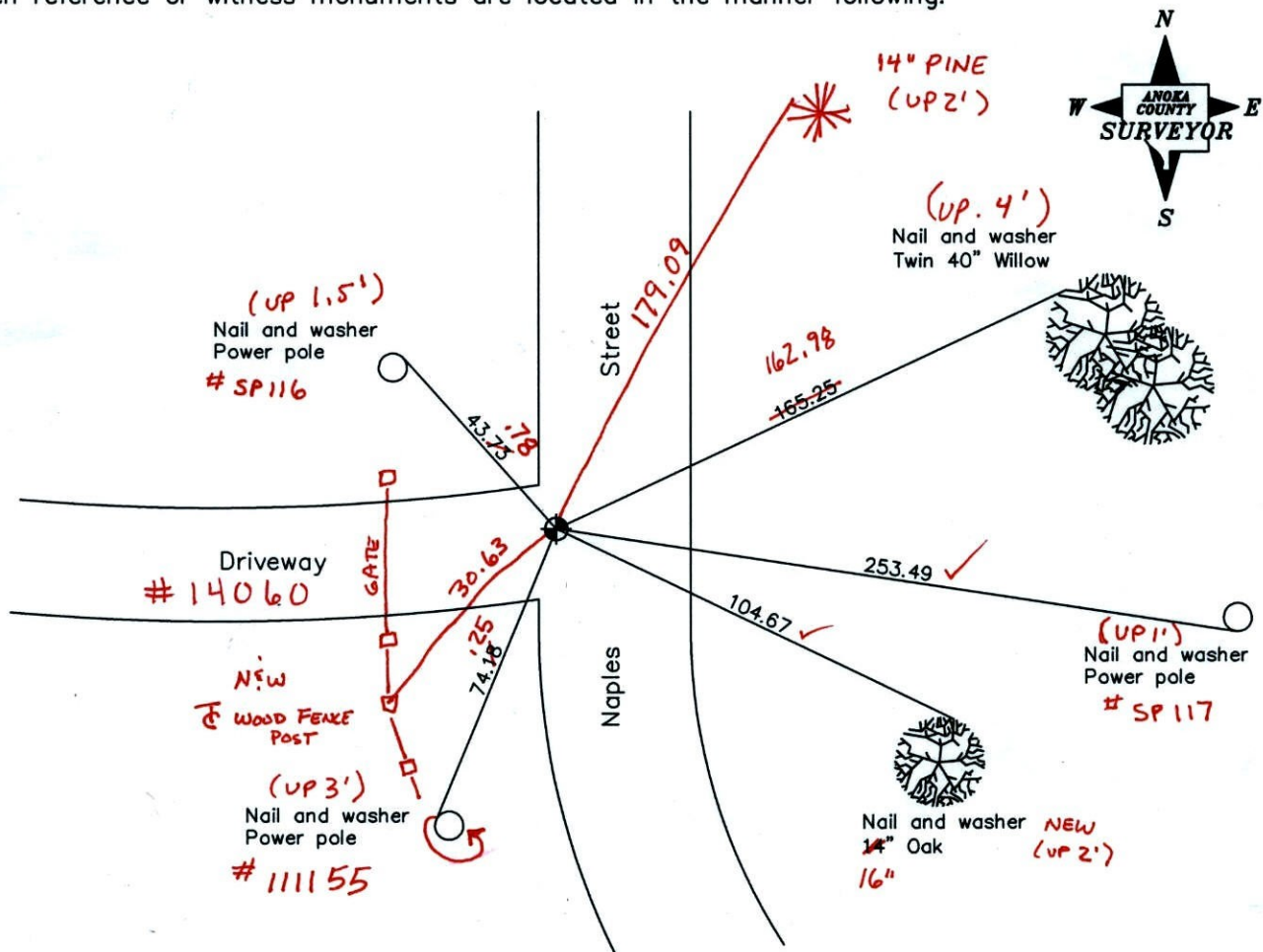
State of Minnesota

Northwest Corner of Sec. 35 Township 32 Range 23

I hereby certify that on the 17th day of July, 1964, I found the described corner which was evidenced by a 6" X 6" granite monument

and I further certify that to perpetuate the location of said corner, I did, at the exact location thereof, place a permanent marker consisting of a cast iron monument ✓

which reference or witness monuments are located in the manner following:



BK-SS

T/T

Revised date

8/02/96
5/04/99
11/30/01
3-21-11

N.A.D. 1983 Coordinates
(1996 adjustment)

County Project Coordinates
Northing <u>169470.6937</u>
Easting <u>521526.9375</u>

State Plane Coordinates
Y _____
X _____

Date 11/30/01

CERTIFICATE OF LOCATION OF GOVERNMENT CORNER

County of Anoka

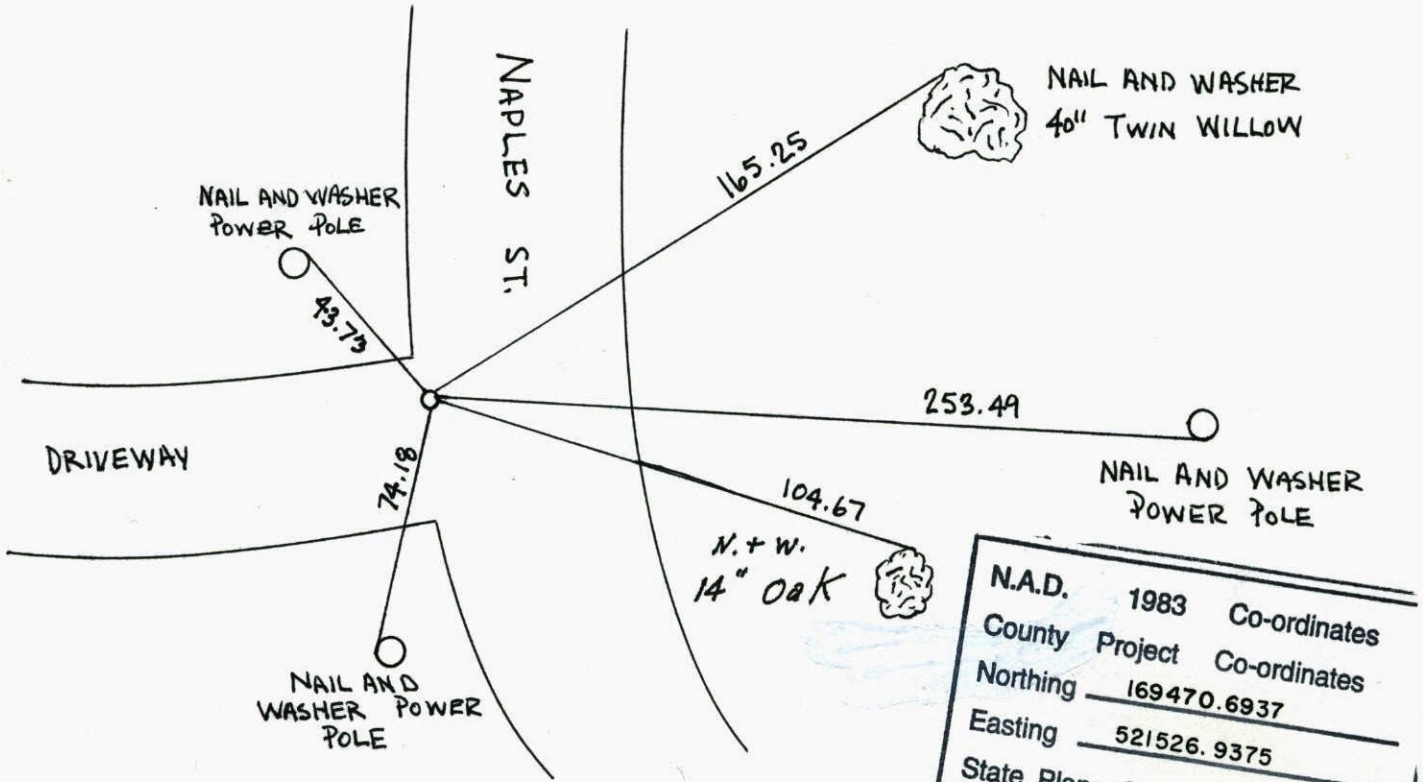
State of Minnesota

NORTHWEST Corner of Sec. 35 Township 32 Range 23

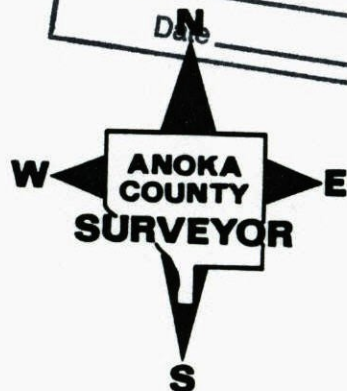
I hereby certify that on the 17TH day of JULY, 19 64, I found the described corner which was evidenced by 6" X 6" GRANITE

and I further certify that to perpetuate the location of said corner, I did, at the exact location thereof, place a permanent marker consisting of CAST IRON MONUMENT

which reference or witness monuments are located in the manner following:



N.A.D.	1983	Co-ordinates
County	Project	Co-ordinates
Northing	169470.6937	
Easting	521526.9375	
State Plane Co-ordinates		
Y	_____	
X	_____	
Date	_____	



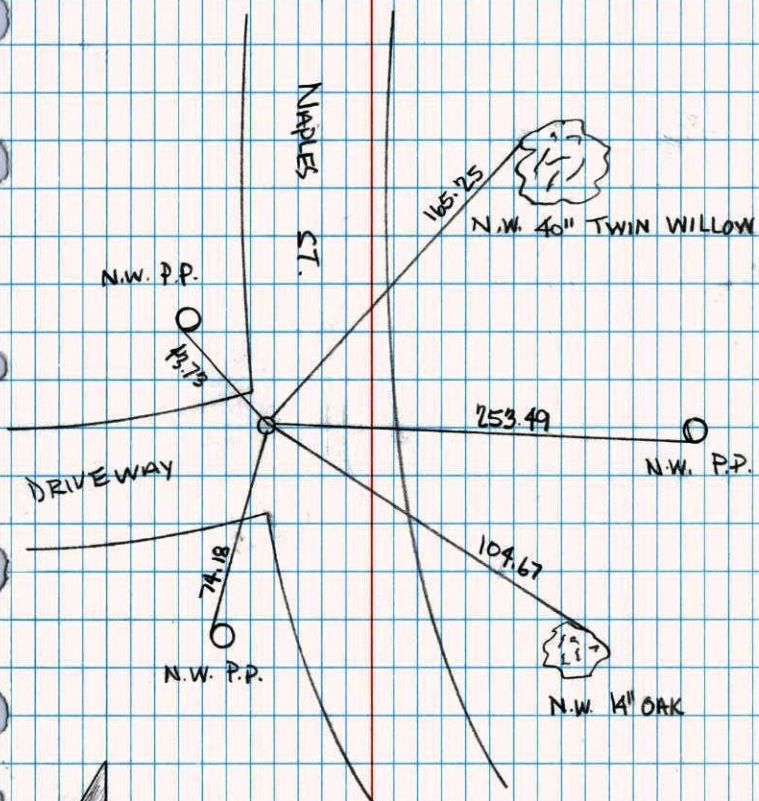
Revised date	Revised date	Revised date
6-29-81		
6-29-87		
11-26-91		
8-2-96		
5-4-99		

NORTHWEST COR. SEC. 35, T. 32, R. 23

RETIED MON. AFTER BEING REPLACED
DUE TO ROAD RECONSTRUCTION

NO. 446

NATIONAL PRINTFAST



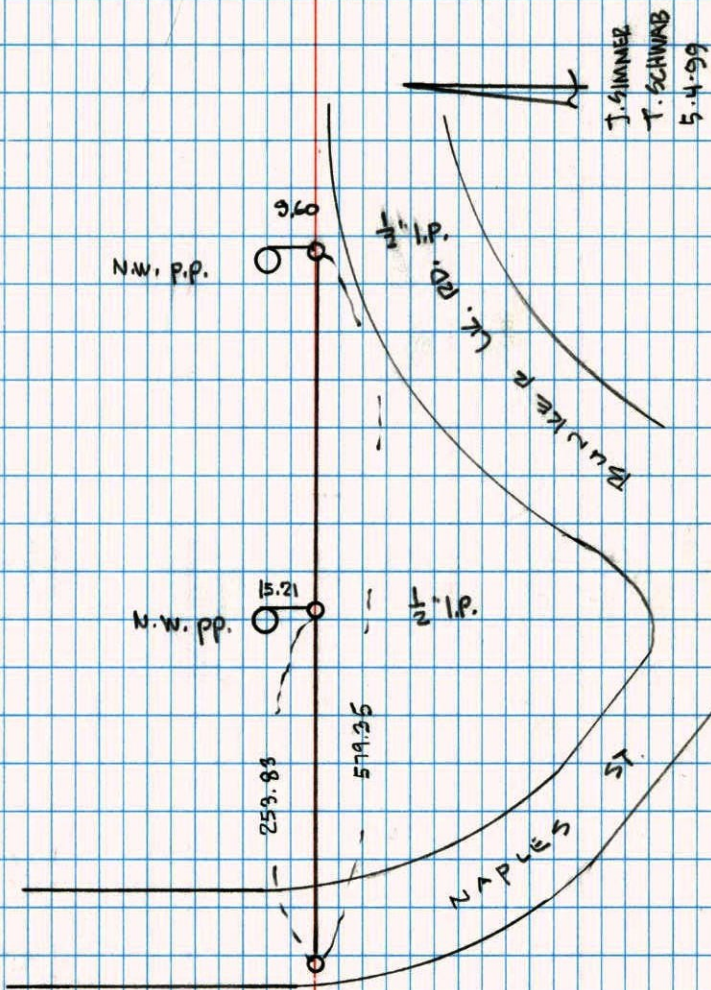
5-4-99
J. SIMMER
T. SCHWAB

NW. COR SEC 35 T 32 R 23

REMOVED C.I.M. FOR CONST.

NO. 446

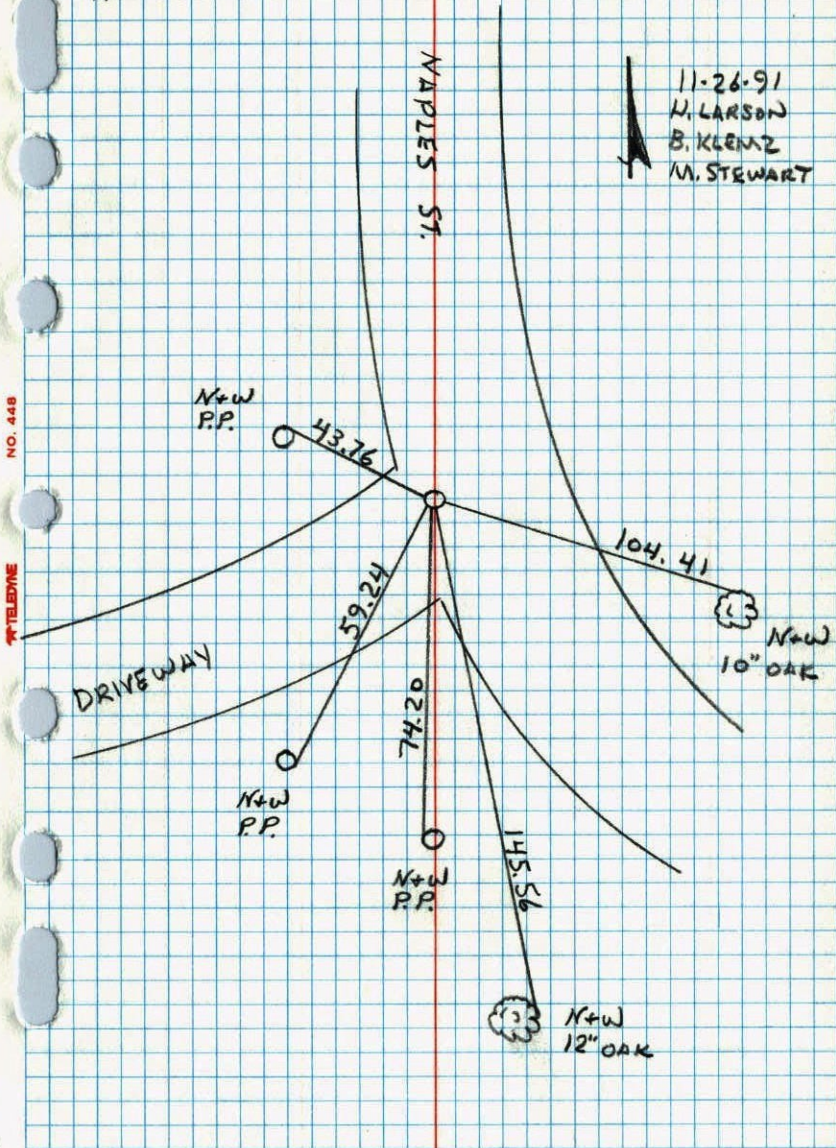
NATIONAL PRINTFAST



J. SIMMER
T. SCHWAB
5-4-99

N.W. CORNER SEC. 35 T32 R23

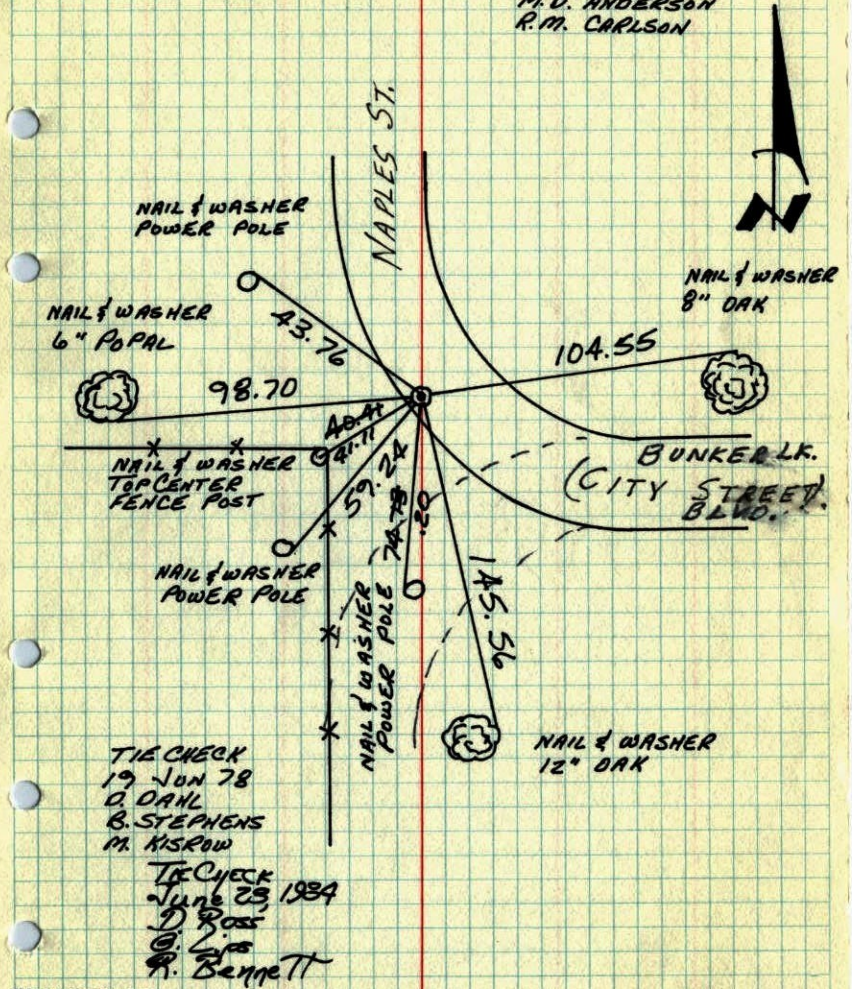
RETIED C.I.



N.W. COR. SEC. 35.-T32-R23

FOUND 6" x 6" GRANITE MONUMENT DOWN 3" FROM ONE ONE REMAINING TIE. PLACED CAST IRON MONUMENT FLUSH ON TOP OF GRANITE.

17 JUL 64
M.O. ANDERSON
R.M. CARLSON



TEMPERATURE CORRECTED
AND HORIZONTALLY
TAPED MEASUREMENTS

ROLAND W. ANDERSON
COUNTY SURVEYOR
'ANOKA COUNTY, MINNESOTA'

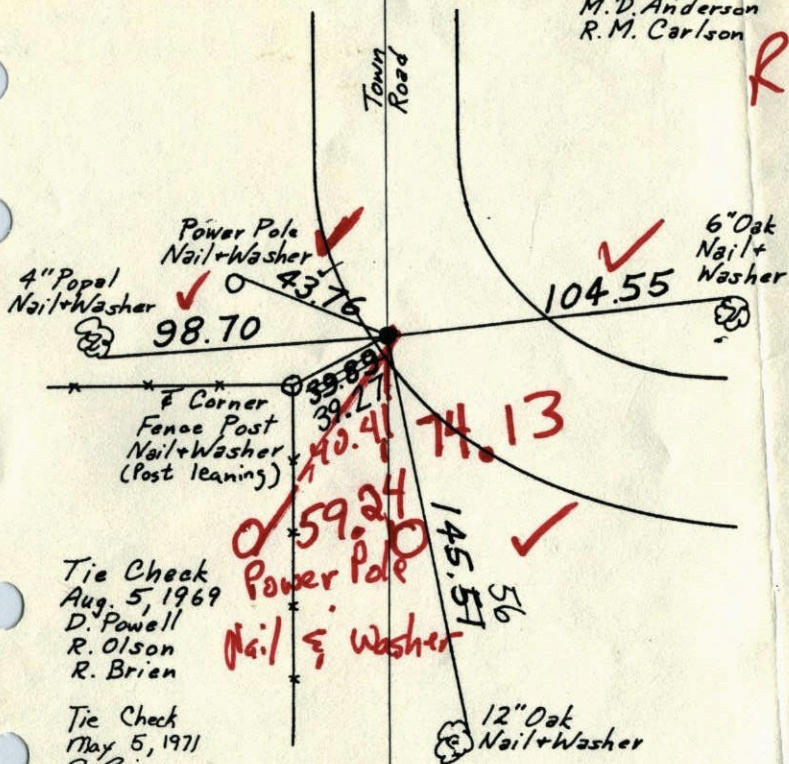
NW Cor. Sec. 35-T32-R23

Found 6"x6" Granite Monument down 3 1/2 from one remaining tie.

Placed Cast Iron Monument flush on top of Granite.

July 17, 1964
M.D. Anderson
R.M. Carlson

RE DRAW



Tie Check
Aug. 5, 1969
D. Powell
R. Olson
R. Brien

Tie Check
May 5, 1971
R. Brien
J. Boettcher

Tie Check
June 13, 1975
D. Dahl
B. Sannerud
G. Adams

TEMPERATURE CORRECTED
AND HORIZONTALLY
TAPED MEASUREMENTS

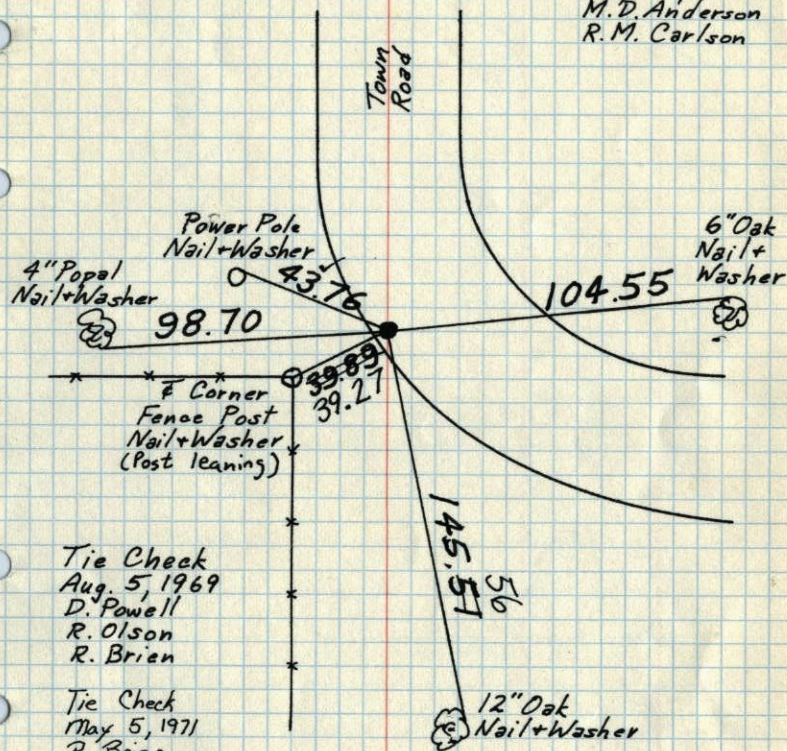
ROLAND W. ANDERSON
COUNTY SURVEYOR
ANOKA COUNTY, MINNESOTA

NW Cor. Sec. 35-T32-R23

Found 6"x6" Granite Monument down 3 1/2 from one remaining tie.

Placed Cast Iron Monument flush on top of Granite.

July 17, 1964
M.D. Anderson
R.M. Carlson



Tie Check
Aug. 5, 1969
D. Powell
R. Olson
R. Brien

Tie Check
May 5, 1971
R. Brien
J. Boettcher

Tie Check
June 13, 1975
D. Dahl
B. Sannerud
G. Adams

TEMPERATURE CORRECTED
AND HORIZONTALLY
TAPED MEASUREMENTS

ROLAND W. ANDERSON
COUNTY SURVEYOR
ANOKA COUNTY, MINNESOTA

107

N.W. Cor. Sec. 35-T32-R23

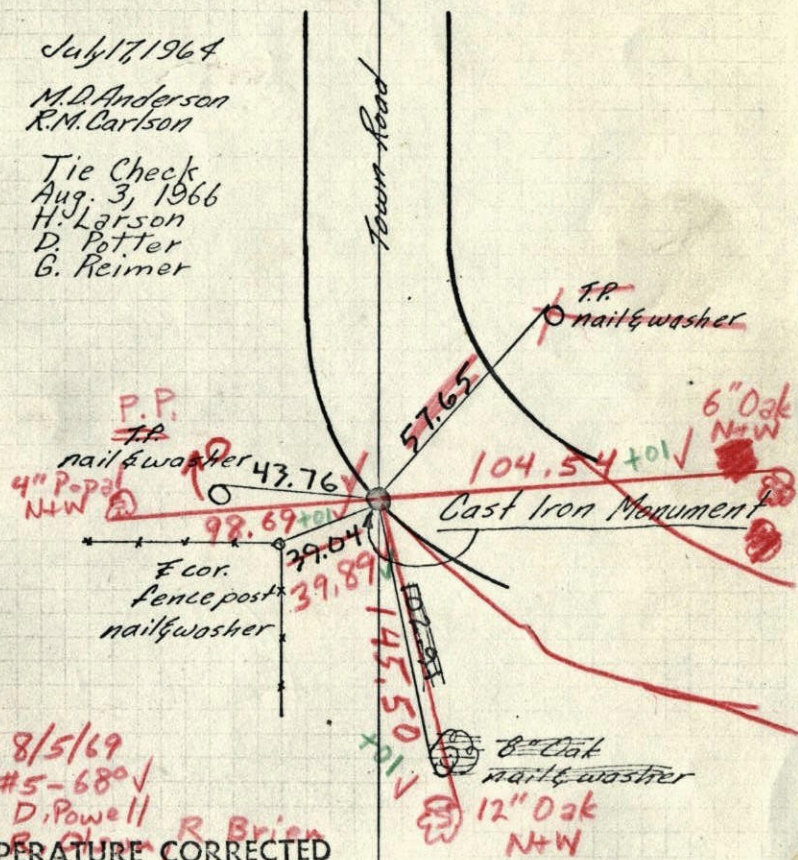
found 6"x6" Granite Monument from
1 remaining tie - Granite down 3'

Placed Cast Iron Monument on top Granite,
flush with blacktop

July 17, 1964

M.D. Anderson
R.M. Carlson

Tie Check
Aug. 3, 1966
H. Larson
D. Potter
G. Reimer



8/5/69
#5-680V
D. Powell
R. Brian
TEMPERATURE CORRECTED
AND HORIZONTALLY
TAPED MEASUREMENTS

ROLAND W. ANDERSON
COUNTY SURVEYOR
ANOKA COUNTY, MINNESOTA

107

N.W. Cor. Sec. 35-T32-R23

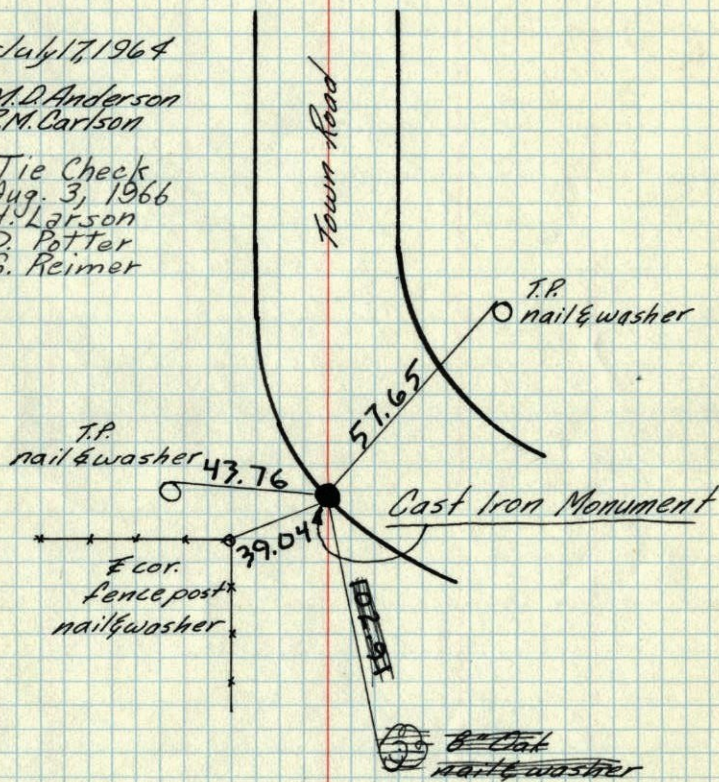
found 6"x6" Granite Monument from
1 remaining tie - Granite down 3'

Placed Cast Iron Monument on top Granite,
flush with blacktop

July 17, 1964

M.D. Anderson
R.M. Carlson

Tie Check
Aug. 3, 1966
H. Larson
D. Potter
G. Reimer



TEMPERATURE CORRECTED
AND HORIZONTALLY
TAPED MEASUREMENTS

ROLAND W. ANDERSON
COUNTY SURVEYOR
ANOKA COUNTY, MINNESOTA

NW cor. Sec. 35-T32-R23

